



Gimmel Contract Management Configuration Guide

Software Version 6.9.1

April 2017

Title: *Gimmel Contract Management Configuration Guide*

© 2016 Gimmel LLC

Gimmel® is a registered trademark of Gimmel Group.

Documentum® is a registered trademark of EMC.

Gimmel LLC believes the information in this publication is accurate as of its publication date. The information in this publication is provided as is and is subject to change without notice. Gimmel LLC makes no representations or warranties of any kind with respect to the information contained in this publication, and specifically disclaims any implied warranties of merchantability or fitness for a particular purpose.

Use, copying, and distribution of any Gimmel software described in this publication requires an applicable software license. For the most up-to-date listing of Gimmel product names and information, visit www.gimmel.com. All other trademarks used herein are the property of their respective owners.

Document Revision History

Publication Date	Document Version #	Description
August 2016	1.0	Initial version
December 2016	1.1	Minor updates
April 2017	1.2	Minor updates

If you have questions or comments about this publication, you can email TechnicalPublications@Gimmel.com. Be sure to identify the guide, version number, section, and page number to which you are referring. Your comments are welcomed and appreciated.

Contents

- About this Guide..... 1**
- Internet Explorer Support..... 2**
 - Browser Settings..... 2
 - Compatibility View Mode..... **Error! Bookmark not defined.***
 - Trusted Sites..... 2*
 - Pop-up Blocker 4*
 - Java Settings 6
 - Java Versions Tested..... 6*
 - Java Control Panel Settings..... 6*
- Logging into the application for the first time..... 9

About this Guide

Designed for the System Administrator responsible for the support and maintenance of the installed and active Gimmel Contract Management system, this Configuration Guide contains technical information for using Gimmel Contract Management version 6.9.1 with Microsoft Internet Explorer.

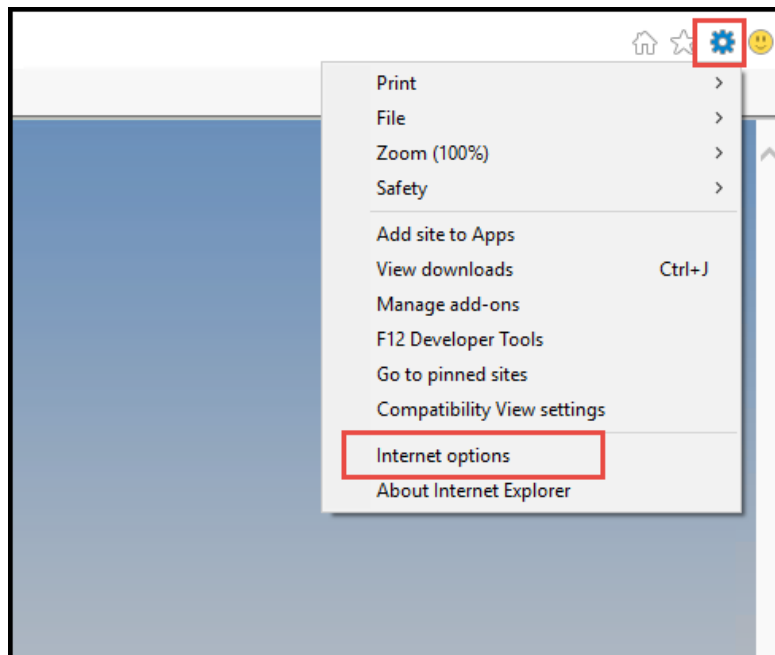
Internet Explorer Support

Gimmel Contract Management has been tested using Microsoft's Internet Explorer versions 9, 10, and 11. The information below provides instructions for configuring your workstation to work with IE11. The same or equivalent settings and configurations should also be applied with Internet Explorer 9 and 10.

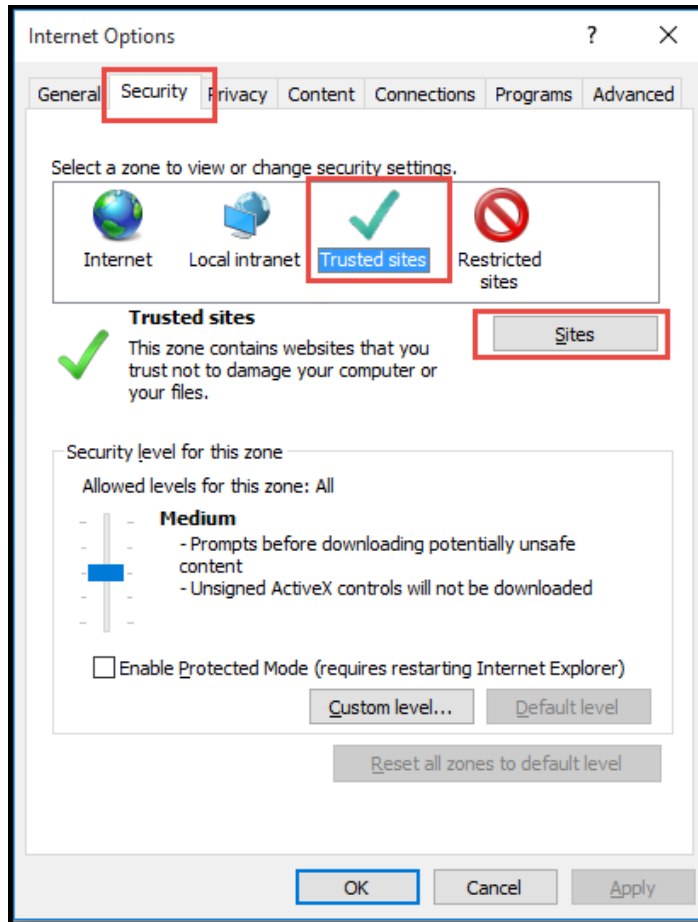
Browser Settings

Trusted Sites

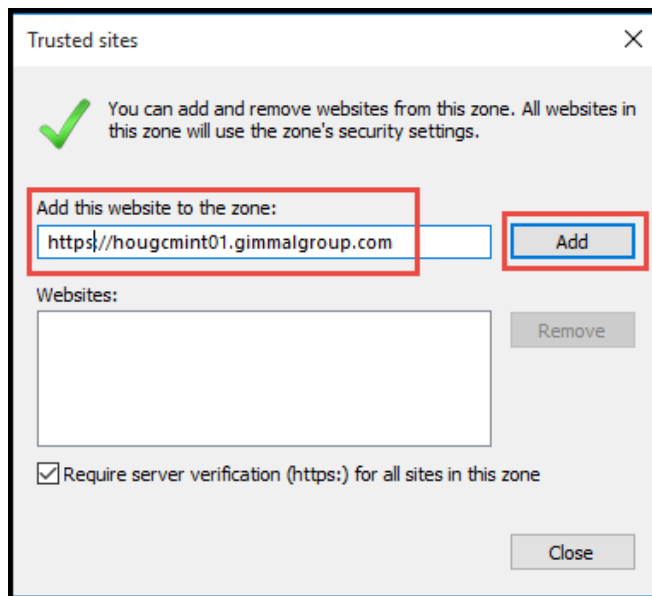
1. In the upper right of the browser, click the gear icon and select **Internet Options**



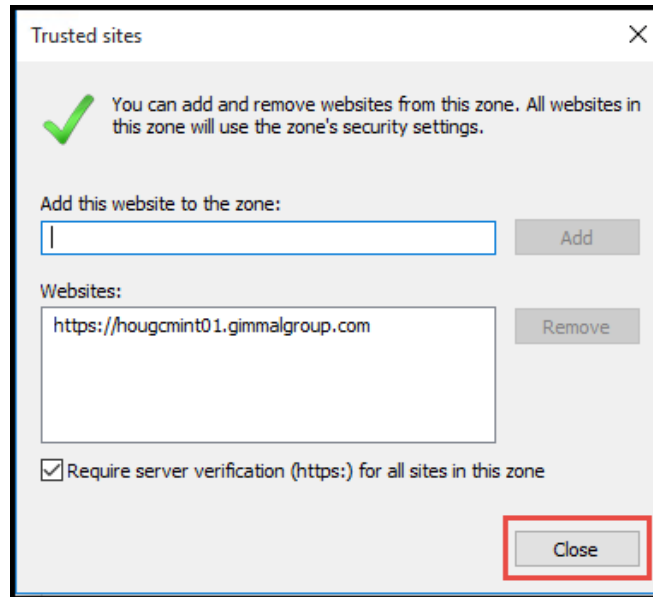
2. Click the **Security** tab
3. Click on **Trusted sites** and then click the **Sites** button



4. Enter the URL for the Gimmel Contract application and click the **Add** button
5. The URL is moved to the list of Websites

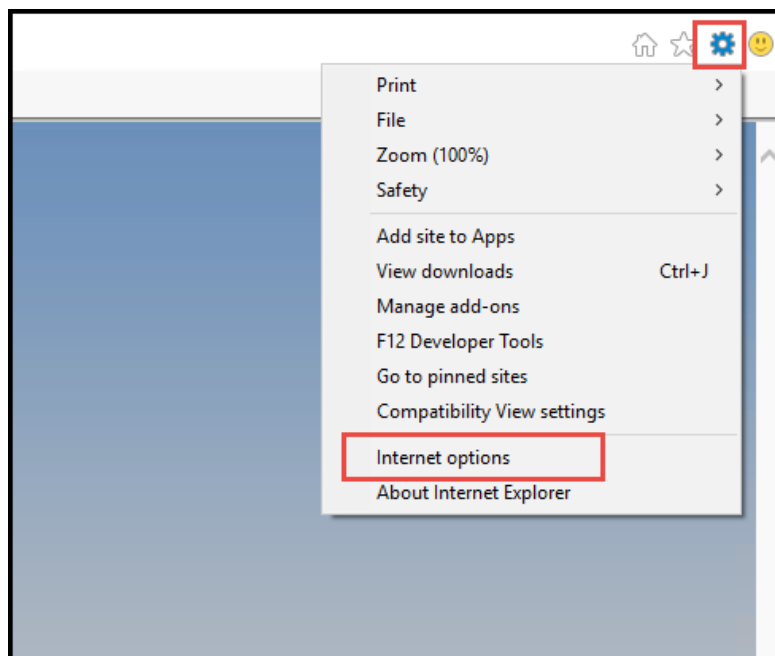


6. Click the **Close** button

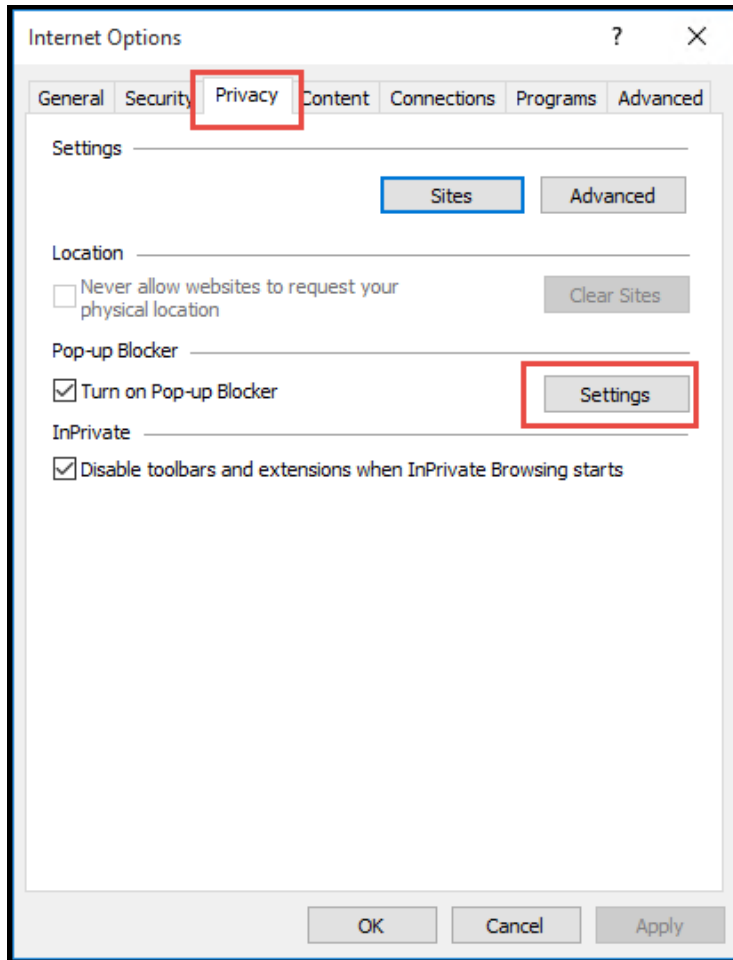


Pop-up Blocker

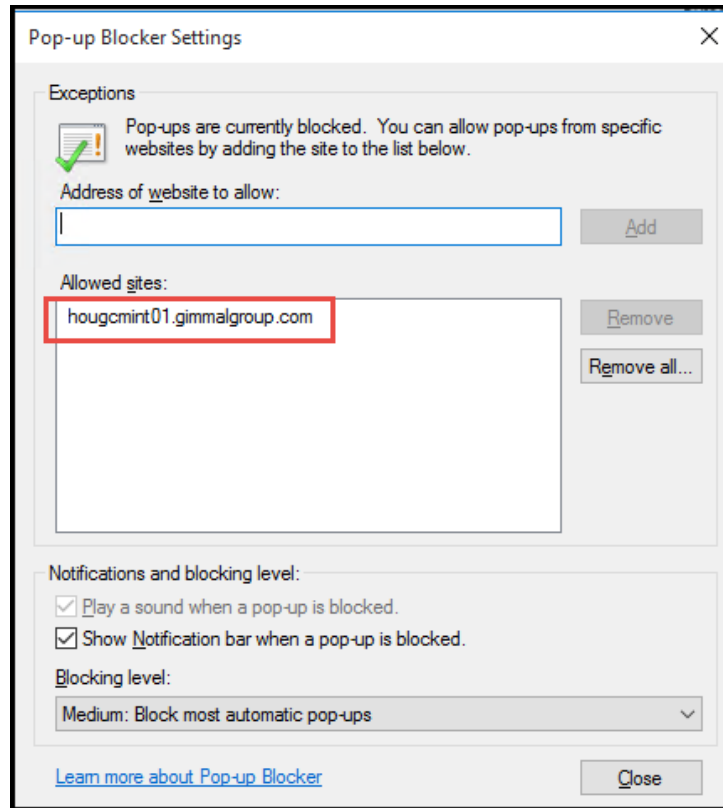
1. In the upper right of the browser, click the gear icon and select **Internet Options**



2. Click the **Privacy** tab
3. Click the **Settings** button



4. Enter the URL for the Gimmel Contract application and click the **Add** button
5. The URL is moved to the Allowed sites



6. Click the **Close** button

Java Settings

Java Versions Tested

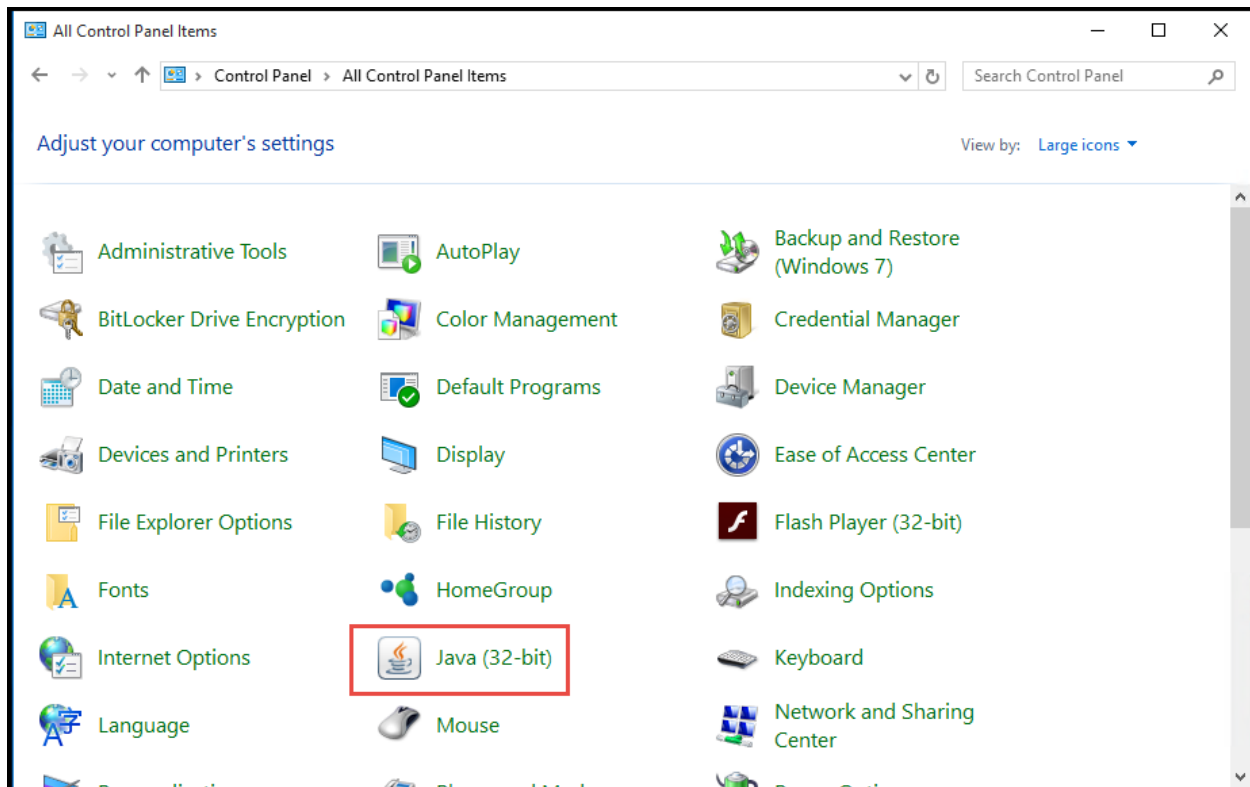
Gimmel Contract Management 6.8.2 was tested using the 32-bit version of the Java JRE versions 1.6, 1.7, and 1.8 (1.8.0.45, 1.8.0.73, 1.8.0.77, 1.8.0.101. and 1.8.0.111). Java JRE versions newer than 1.8.0.111 have not been fully tested.

Java JRE versions 1.6.0.22 – 1.6.0.24 have a known bug/security incompatibility with the software and are not supported.

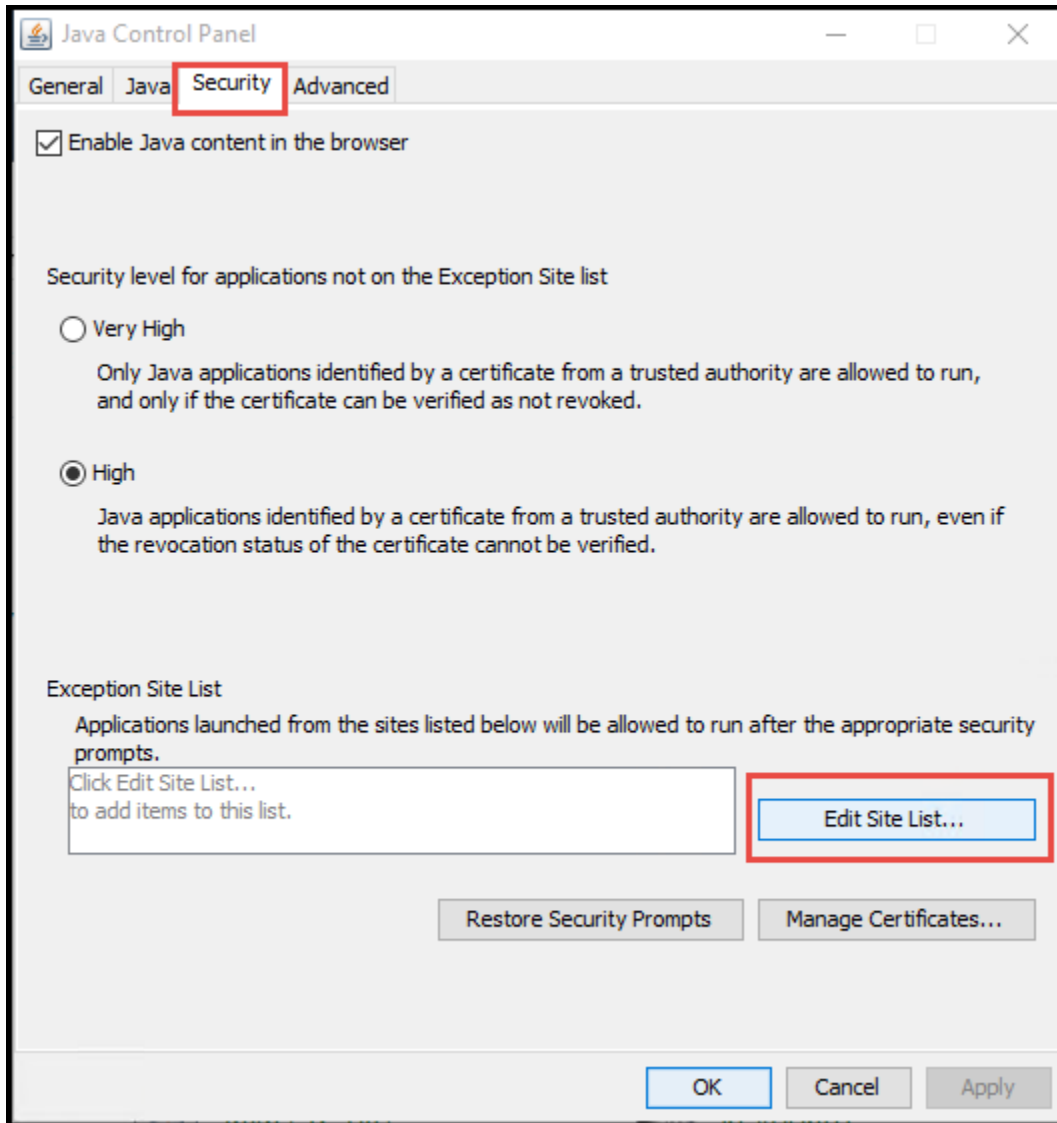
Java Control Panel Settings

Follow these steps to add the Gimmel Contract Management URL to the Java Exception Site List.

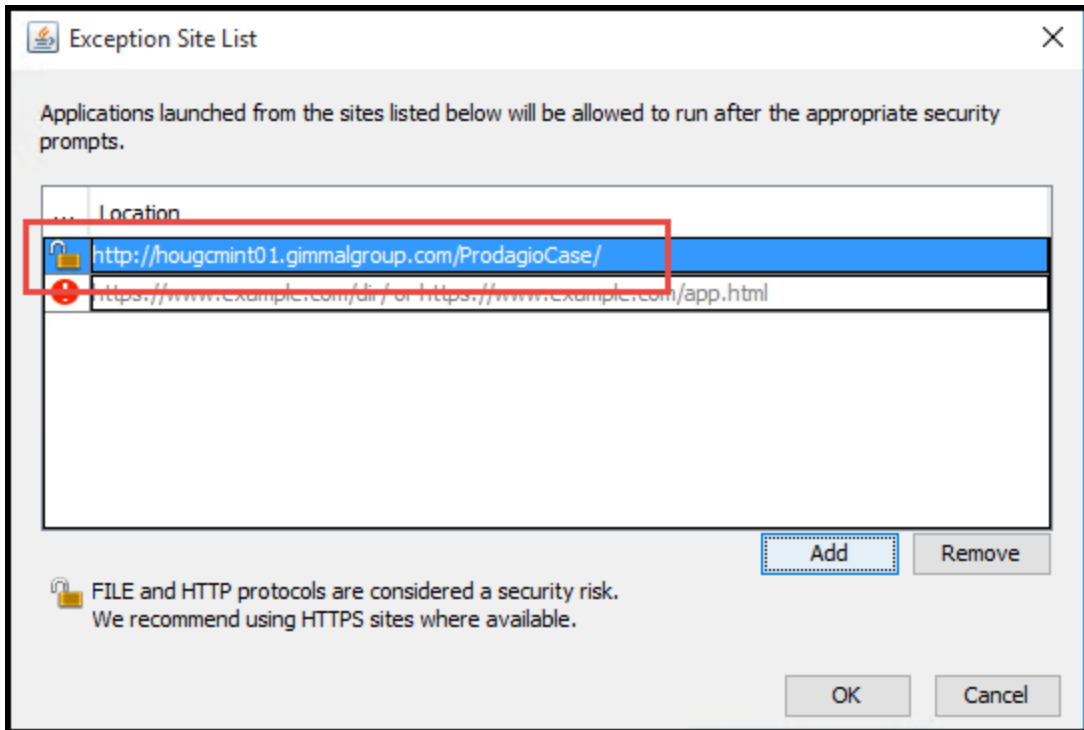
1. Click **Start | Control Panel**
2. Click on the **Java (32-bit)** icon to open the Java Control Panel



3. In the Java Control Panel, click the **Security** tab
4. The *Security level for applications not on the Exception Site list* should be set to **High**.
 - a. If the user's Java **Security** tab has **Medium** as an options, then **Medium** should be selected.
5. On the Security tab, click the **Edit Site List** button



6. Click on the **Add** button
7. Enter the URL for the Gimmel Contract Management application. NOTE: The trailing slash MUST be included in the URL

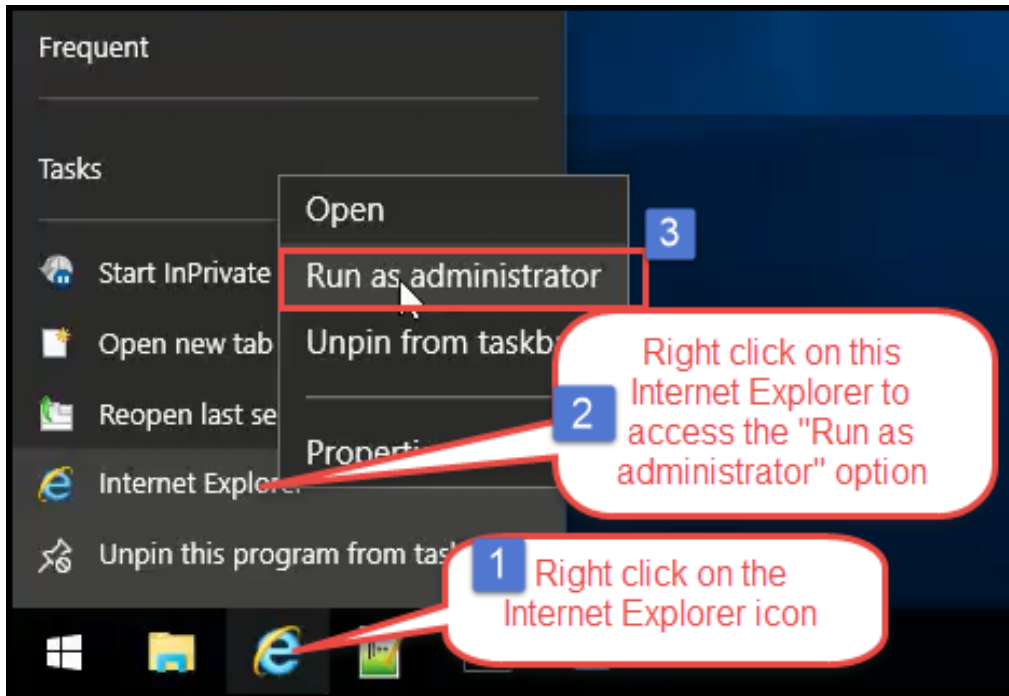


8. In the Exception Site List, click **OK** to close the dialog
9. In the Java Control Panel, click **OK** to close the dialog

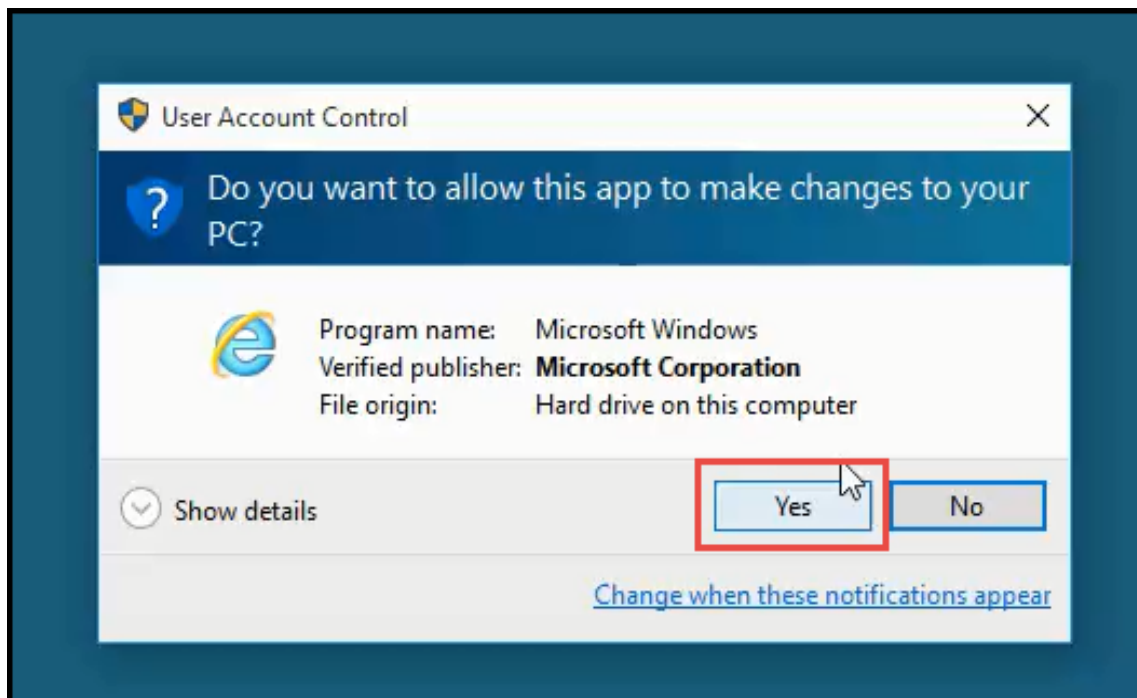
Logging into the application for the first time

To allow for proper installation of the Drag and Drop functionality, Internet Explorer should be launched as an Administrator the first time you login to Gimmal Contract Management.

1. Right click on the **Internet Explorer icon in the Taskbar**, then right click on **Internet Explorer** under the Tasks section, then click on **Run as administrator**

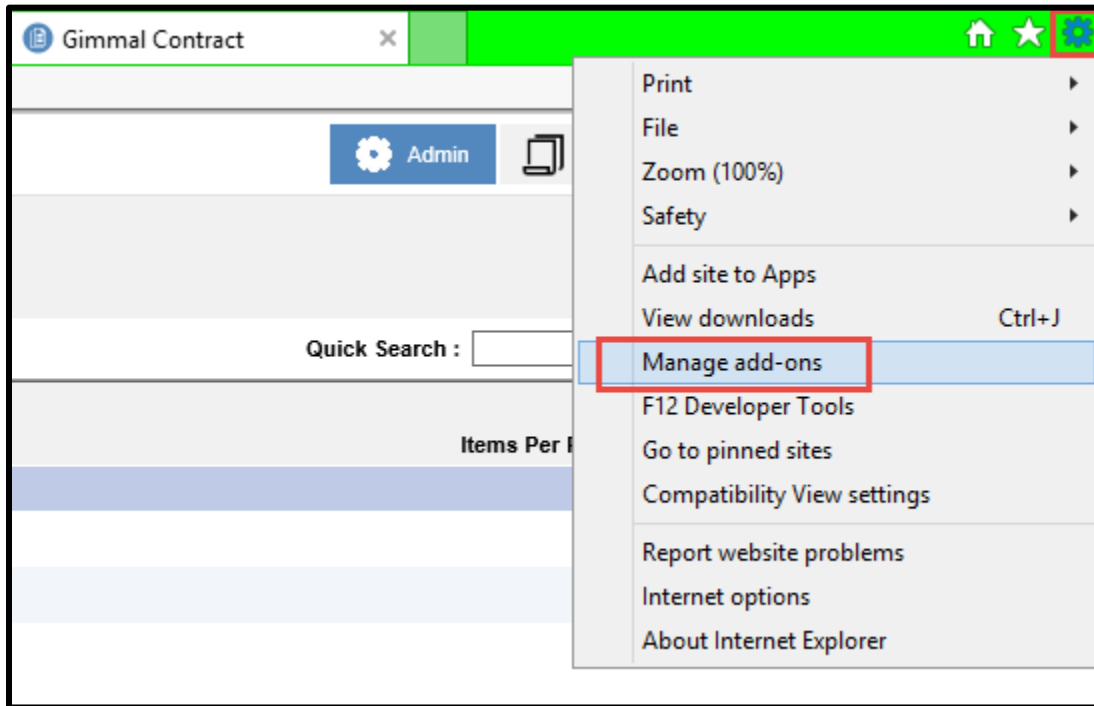


2. Click **Yes** on the User Account Control window

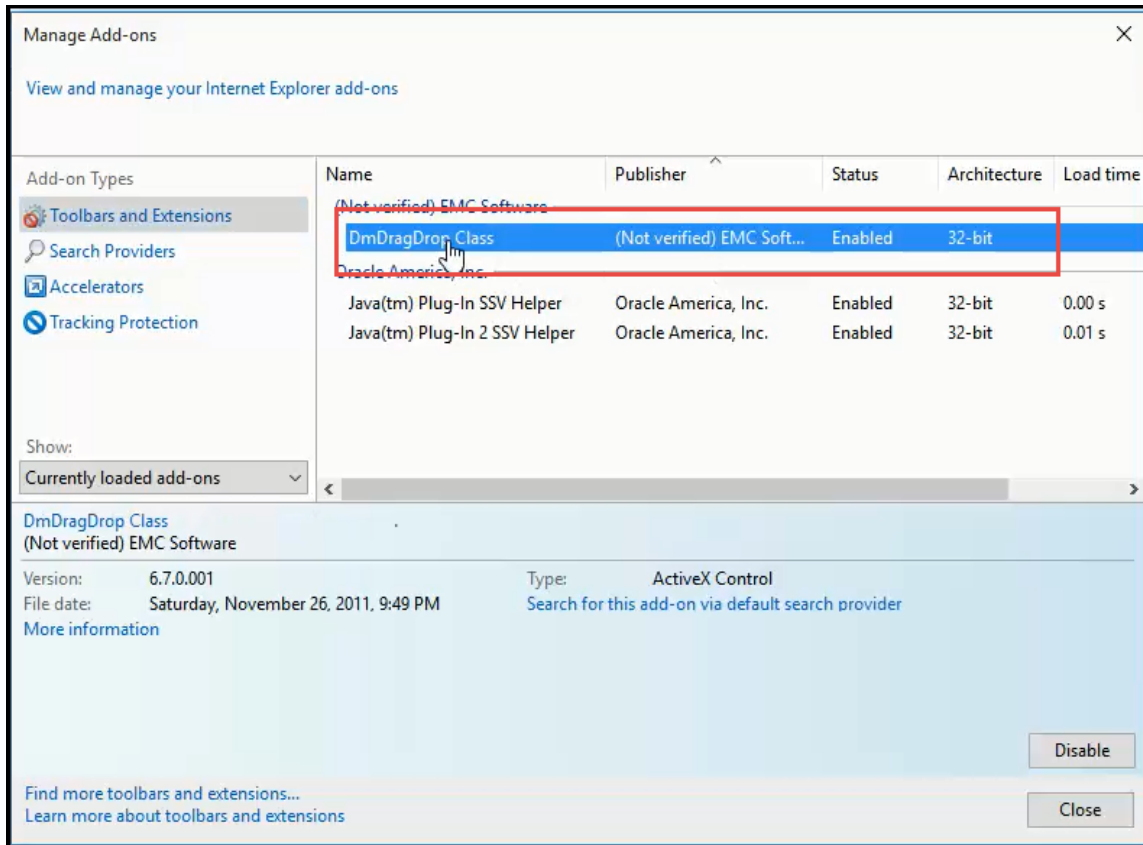


3. Login to Gimmel Contract Management
4. When prompted to install the WdkPluginCab.CAB file, click the **Install** button

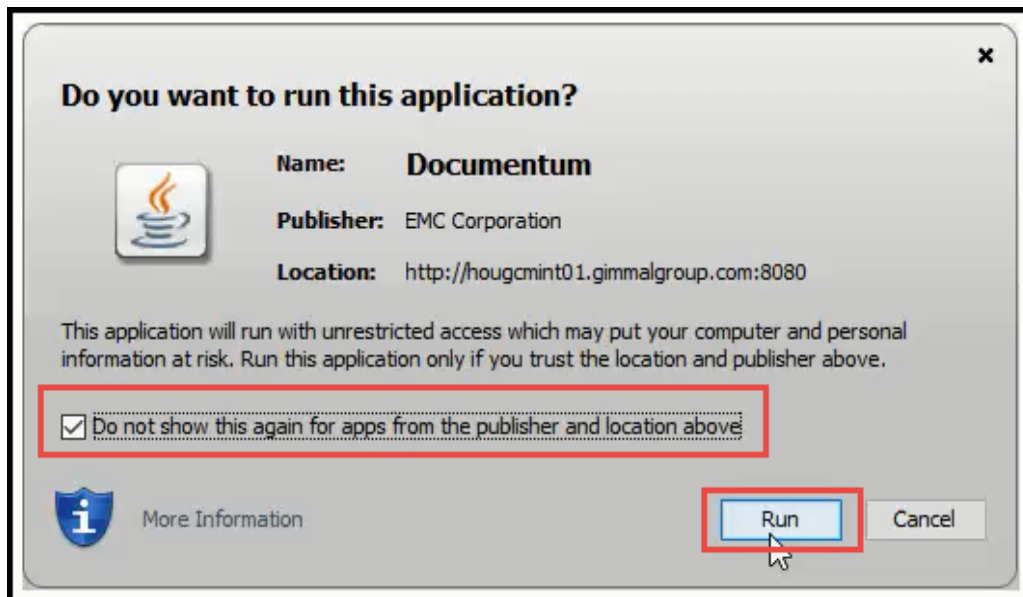
5. On the Internet Explorer – Security Warning dialog, click the **Install** button to begin the installation process.
6. To verify the installation was successful, click the **gear** icon, then select **Manage add-ons**



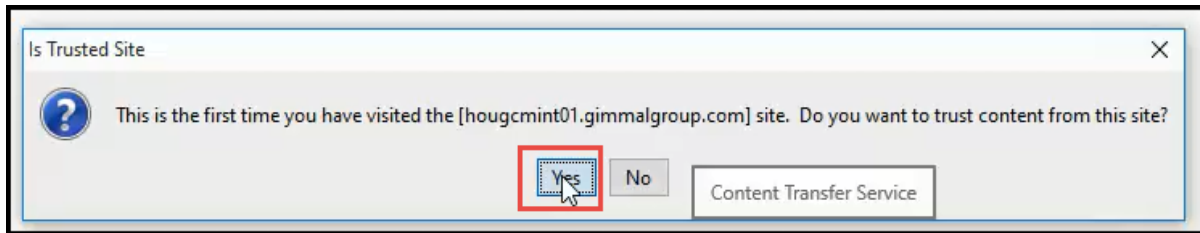
7. Verify the **DmDragDrop Class** is displayed in the list of add-ons



8. The first time that a document is checked out, you might be prompted to allow Java to run.
9. Check the “Do not show this again for apps from the publisher and location above” check box and click the **Run** button



10. On the "Is Trusted Site" window, click the **Yes** button



11. On the Security Warning window, check the "Do not show this again for this app and web site" check box and click the **Allow** button

